

Engineered with Precision

 LX Hausys

[hflor.eu](https://hflor.eu)

# H·FLOR

Product Catalogue



Luxury Vinyl Tile Flooring





04

#### ABOUT HFLOR

Perfecting the details of natural wood and fine stones



06

#### ABOUT HFLOR

What makes HFLOR's LVT so unique?



08

#### ABOUT PRESTG

Unifying nature and technology to create truly inspirational spaces.



14

#### PRESTG DRYBACK COLLECTION



26

#### PRESTG DECORIGID COLLECTION



38

#### PRESTG DECOLAY COLLECTION



48

#### GET IN TOUCH



# ABOUT HFLOR

The LG group is world-renowned for its production of electronics yet little knowledge of its beginnings in plastic manufacturing, especially that of homeware and more specifically vinyl flooring 60 years ago in 1958. Nowadays, the LX Hausys brand is responsible for a wide range of interior materials including windows, flooring, wall covering and surfaces.

## Perfecting the Details of Natural Wood and Fine Stones

As part of the LX global corporation, HFLOR principle strengths are founded in design, technology, innovation and quality.

For over 60 years we've been developing and producing high performance flooring using the latest advanced manufacturing techniques, creating various ranges of human friendly and eco-conscious luxury vinyl tiles.

With natural woods and stones in over 90 varieties, our collection offers incredible freedom and creativity both in terms of design capabilities and installation methods. Our planks and tiles come in various width and length as well as thickness and allow limitless creativity. Our portfolio spans glue-down, looslay and click-together constructions, all covered by wear warranties that guarantee our flooring for use in both domestic and high-use commercial environments.

Whether you're looking for a floor to grace your home, professional space or commercial environment, we're certain we have the perfect selection for your requirements, engineered with precision.



# WHAT MAKES HFLOR'S LVT SO UNIQUE?

## DURABLE TECHNOLOGY

Our double coated surface treatment improves resistance to scratches and stains whilst also ensuring the floor is easy to clean and maintain. Our products also offer excellent resistance to indentation, which protects against damage.

All of our LVT is protected by a warranty of at least 20 years for residential installations or 10 years for commercial installations.



## HUMAN FRIENDLY

Our strategy concentrates on developing and engineering human-inspired and trend-focused products that add to quality of life. Our LVT collections are warmer and quieter underfoot when compared to their natural wood and stone counterparts and are suitable for underfloor heating. Our LVT creates an aesthetically pleasing, contemporary yet timeless environment that is both comfortable and future proof.



## EXCELLENT RESISTANCE TO WATER

Compared with wood or laminate flooring, LVT is completely water resistant with no swelling or distortion making it the perfect choice for all areas.

With its anti-bacterial properties, LVT is the ideal floor for kitchens, bathrooms and playrooms where spills can be easily wiped away.



## DESIGN INNOVATION

A beautiful assortment of unique wood and stone finishes available across a natural and modern colour palette. High resolution imaging presents a realistic visual combined with a textured surface for the ultimate real feel.



## CONSIDERATE SPACES

Our LVT ranges are hygienic and easy to maintain. Unlike carpet and other flooring types they don't hold dust, dirt, pollen or other allergens. The double coated surface treatment protects your floor by minimising dirt adhesion, making regular cleaning easier and reducing the need for specialist products and equipment. To care for your floor simply brush, vacuum or damp mop the area.



## ECO-CONSCIOUS

Our brand values stem from developing products using ethical and eco-conscious manufacturing techniques to give you products that not only look great but also provide comfortable and safe environments.

Our entire LVT collection is both FloorScore® and DIBt certified for superior indoor air quality whilst also being free from harmful plasticisers and heavy metals. Instead it is made from safer, stronger raw materials and is fully recyclable.



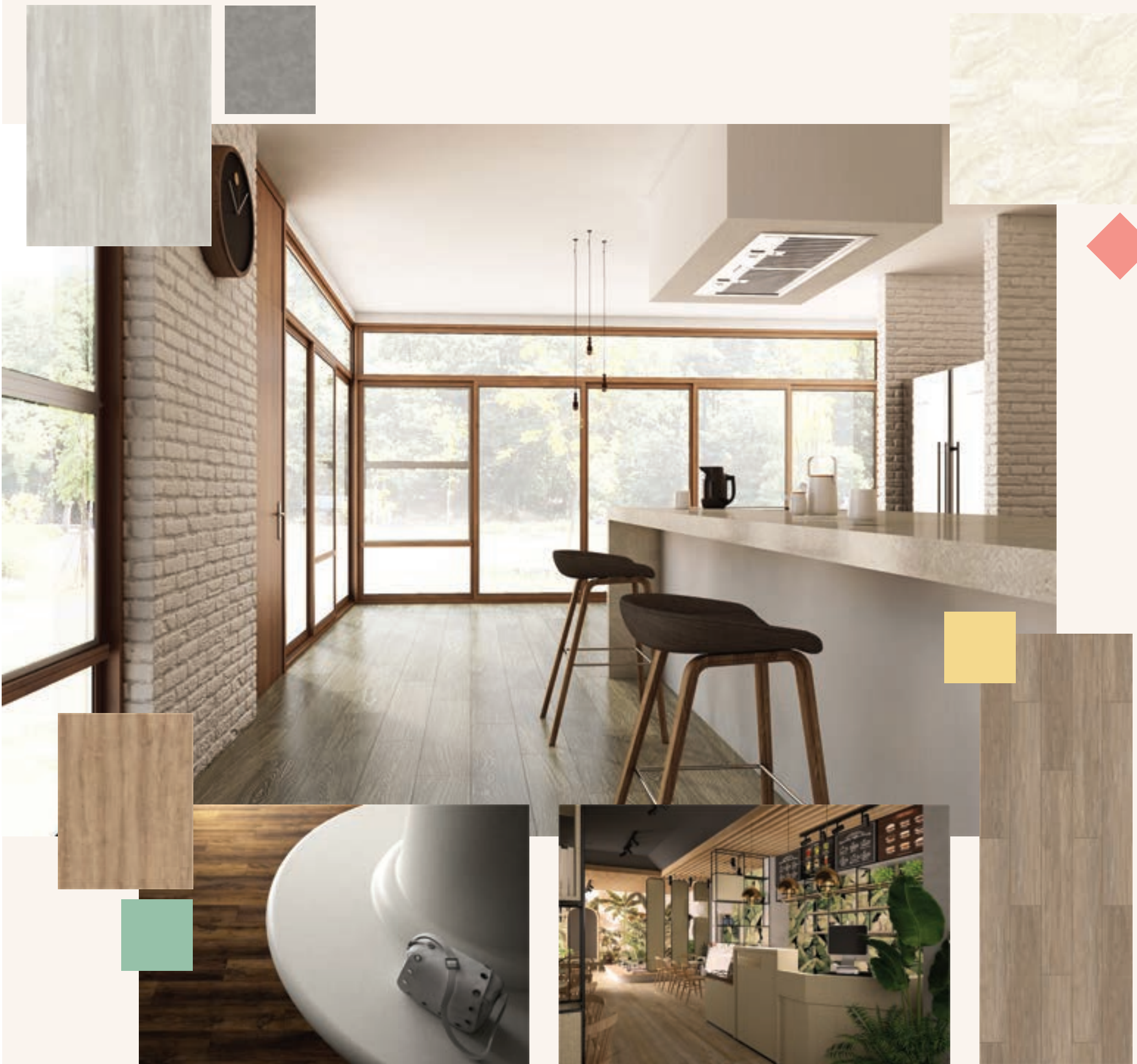




# ABOUT PRESTG

**Unifying nature and technology to create truly inspirational spaces.**

The premium flooring line PRESTG featuring top-class technology and design philosophy reproducing the original texture and look of fine wood and stones, and maintaining the beauty of nature for a long time to give customers new experiences



## A Flooring for Every Space

HFLOR is a flooring for elegant interior design, public building, residential spaces and much more. Bring your flooring projects toward the best results by working with a trusted partner that guides you to enjoy the process of creating a beautiful space.



# PRESTG PORTFOLIO AT A GLANCE

All ranges in PRESTG portfolio are available in 3 different installation methods: Dryback (Glue-down), Click or Looselay. Consider the installation methods and the required technical specs required for your project first, and choose the pattern and colour for your space.



• Glue down

## PRESTG DRYBACK COLLECTION

**PRESTG DRYBACK 55**  
**PRESTG DRYBACK 70**



Available in 2 different specs as a traditional glue down installation technique suitable for all home environments.

PRESTG DRYBACK 55 is a budget friendly tiled plank with a wear layer of 0.55 mm. Perfect for those who are looking for a gorgeous floor covering choice with a level of flexibility.

PRESTG DRYBACK 70 collection has a thicker wear layer of 0.70mm which makes it more of a suitable choice for areas of high footfall or in general commercial installations.

A huge variety of colours across wood and stone effects from light colours through mid tones to darker hues.

With both PRESTG DRYBACK specs, existing floor covering will need to be removed and the subfloor will need to be smooth and any damp issues resolved, so a professional installation service is recommended. Speak to your local independent and expert retailer who will be able to advise about the best product for your specific situation.



• Click



## PRESTG DECOLAY COLLECTION

**PRESTG DECOLAY 55**  
**PRESTG DECOLAY 70**  
**PRESTG ACOUSTIC DECOLAY 55**



## PRESTG DECORIGID COLLECTION

**PRESTG DECORIGID 55**

A choice of popular wood effect and best selling stone effect tiles and planks throughout the light to dark colour spectrum with a general commercial wear rating and rigid technology to enable the product to be laid on unprepared subfloors or old flooring. Rigid plank technology eliminates ripples and waves caused by uneven subfloors.

Perfect for areas of high footfall or more traditional properties where time and cost implications may prevent a change in floor covering.

Whilst it can also be installed DIY, we recommend a professional installation service if protecting original floors. Please seek expert advice from your local, independent retailer who can advise as to the best product for your specific installation.



• Looselay


Looselay vinyl flooring has developed to reduce installation time and allow access to underfloor utilities. Under the right conditions these tiles can be placed on the subfloor without any adhesive. This helps to make them an easy installation option for anyone and everyone. We offer a range of loose lay floors for both commercial settings and domestic properties.

# PRESTG DRYBACK

PRESTG DRYBACK 55  
PRESTG DRYBACK 70

## PATTERNS AND COLOURS

### STONE



Crack Concrete Black 6904



Pearl Concrete 6913




Marble Bianco 6917




Concrete Silver 6942




Concrete Light Grey 6944




Crack Concrete Grey 6906



Marble Onyx 6915




Concrete Taupe 6941




Concrete Anthracite 6943


### WOOD



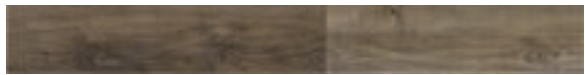
Birch Marigold 7806




Birch Buttermilk 7831




Washed Oak Camel 7837




Treasure Oak Umber 7911




Washed Oak Grey 7915




Birch Honey Gold 7830




Washed Oak Sand 7836



Weathered Pine 7910



Treasure Oak Autumn 7913



Washed Oak Sunflower 7916



	Wear Layer	Pattern	Total Thickness	Dimensions Width x Length	Packaging per carton
PRESTG DRYBACK 55	0.55 mm	STONE	3.0 mm	457.2 mm x 914.4 mm	3.34 sqm (8 pcs)
		WOOD	3.0 mm	228.6 mm x 1219.2 mm	3.34 sqm (12 pcs)
PRESTG DRYBACK 70	0.70 mm	STONE	3.0 mm	457.2 mm x 914.4 mm	3.34 sqm (8 pcs)
		WOOD	3.0 mm	228.6 mm x 1219.2 mm	3.34 sqm (12 pcs)

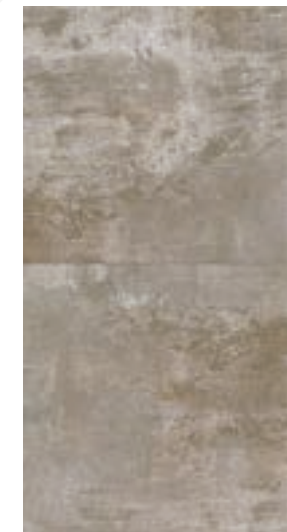
All colours available in 0.55 mm and 0.70 mm wear layer.





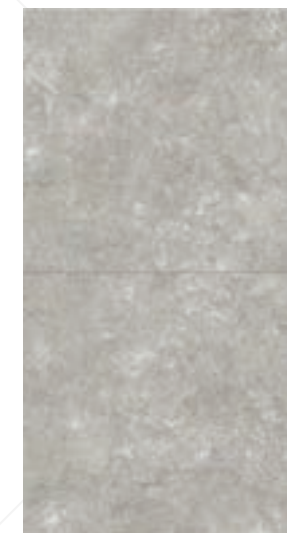
457.2 mm x 914.4 mm

**Crack Concrete Black 6904**



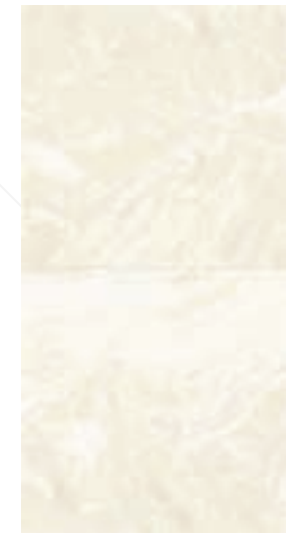
457.2 mm x 914.4 mm

**Crack Concrete Grey 6906**



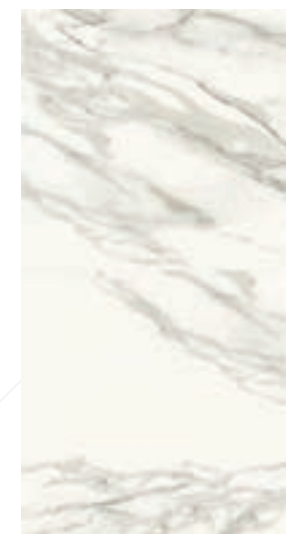
457.2 mm x 914.4 mm

**Pearl Concrete 6913**



457.2 mm x 914.4 mm

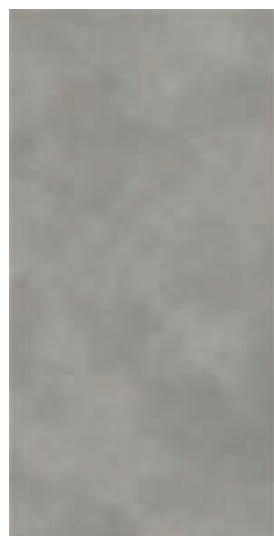
**Marble Onyx 6915**



457.2 mm x 914.4 mm

**Marble Bianco 6917**





457.2 mm x 914.4 mm

Concrete Taupe 6941



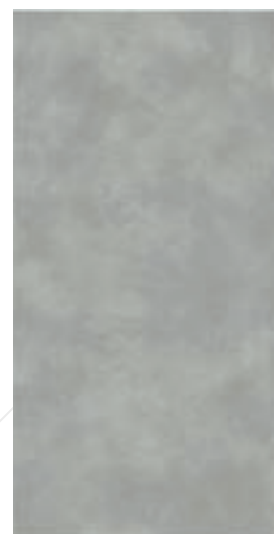
457.2 mm x 914.4 mm

Concrete Silver 6942



457.2 mm x 914.4 mm

Concrete Anthracite 6943



457.2 mm x 914.4 mm

Concrete Light Grey 6944







**Birch Marigold 7806** 228.6 mm x 1219.2 mm



**Birch Honey Gold 7830** 228.6 mm x 1219.2 mm



**Birch Buttermilk 7831** 228.6 mm x 1219.2 mm



**Washed Oak Sand 7836** 228.6 mm x 1219.2 mm



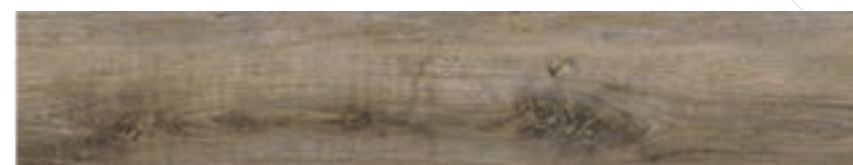
**Washed Oak Camel 7837** 228.6 mm x 1219.2 mm





**Weathered Pine 7910**

228.6 mm x 1219.2 mm



**Treasure Oak Umber 7911**

228.6 mm x 1219.2 mm



**Treasure Oak Autumn 7913**

228.6 mm x 1219.2 mm



**Washed Oak Grey 7915**

228.6 mm x 1219.2 mm



**Washed Oak Sunflower 7916**

228.6 mm x 1219.2 mm





# TECHNICAL DATA SHEET

PRESTG DRYBACK 55 AND 70 meets the requirements of EN ISO 10582

Characteristic	Standard	Unit	PRESTG DRYBACK 55	PRESTG DRYBACK 70
Type of Flooring	EN ISO 10582		PVC Heterogeneous	PVC Heterogeneous
Classification	EN ISO 10874		Class 23/33/42	Class 34/43
Weight	EN ISO 23997	kg/sqm	5.72	6.3
Overall Thickness	EN ISO 24346	mm	3.0	3.0
Wear Layer Thickness	EN ISO 24340	mm	0.55	0.70
Dimensional Stability	EN ISO 23999	%	< 0.10 average result 0.05	< 0.10 average result 0.05
Wear Resistance	EN 660-2		T	T
Castor Chair Resistance	EN ISO 4918		No Change	No Change
Burning Characteristic	EN 13501-1		Blf-s1	Blf-s1
Stain Resistance	EN ISO 26987		No Change PUR Surface Treatment	No Change PUR Surface Treatment
Slip Restraint	EN ISO 51130		R10	R9
Acoustic Insulation	EN ISO 717-2	dB	3	2
Warranty In Years	EN 12524		10 Commercial 20 Residential	10 Commercial 20 Residential





# PRESTG DECORIGID

PRESTG DECORIGID 55

## PATTERNS AND COLOURS

### STONE



Crack Concrete Black 6904



Pearl Concrete 6913



Marble Bianco 6917



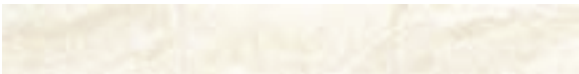
Concrete Silver 6942



Concrete Light Grey 6944



Crack Concrete Grey 6906



Marble Onyx 6915



Concrete Taupe 6941



Concrete Anthracite 6943

### WOOD



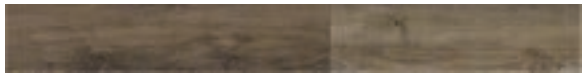
Birch Marigold 7806



Birch Buttermilk 7831



Washed Oak Camel 7837



Treasure Oak Umber 7911



Washed Oak Grey 7915



Birch Honey Gold 7830



Washed Oak Sand 7836



Weathered Pine 7910



Treasure Oak Autumn 7913



Washed Oak Sunflower 7916



PRESTG DRYBACK 55

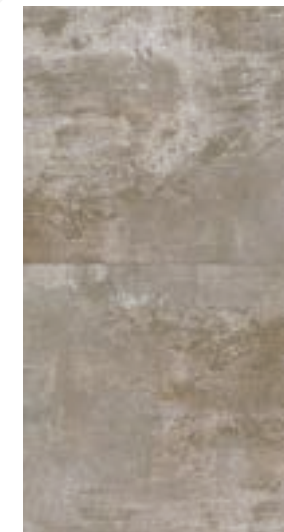
Wear Layer	Pattern	Total Thickness	Dimensions Width x Length	Packaging per carton
0.55 mm	STONE	3.0 mm	450 mm x 900 mm	3.34 sqm (8 pcs)
	WOOD	3.0 mm	228.6 mm x 1220 mm	3.34 sqm (12 pcs)





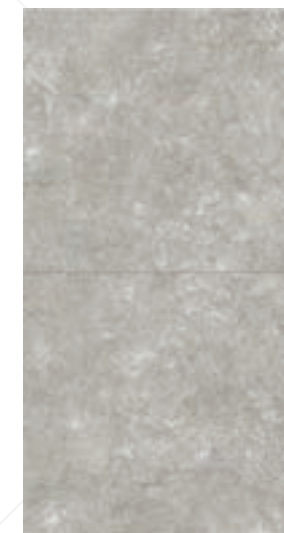
450 mm x 900 mm

**Crack Concrete Black 6904**



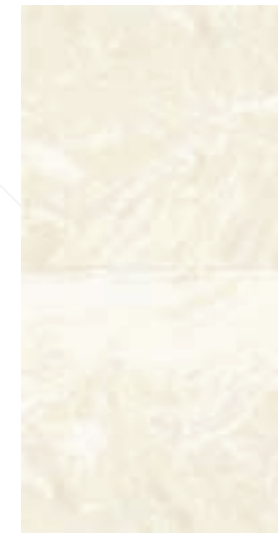
450 mm x 900 mm

**Crack Concrete Grey 6906**



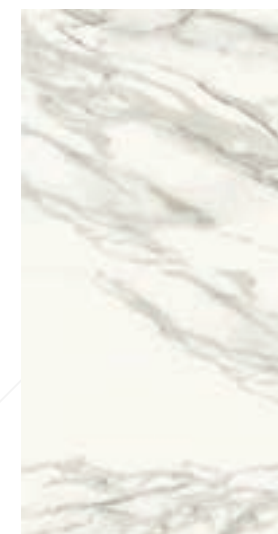
450 mm x 900 mm

**Pearl Concrete 6913**



450 mm x 900 mm

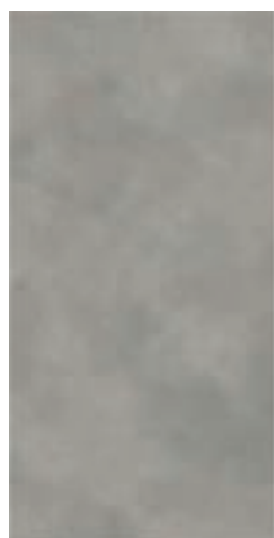
**Marble Onyx 6915**



450 mm x 900 mm

**Marble Bianco 6917**





450 mm x 900 mm

Concrete Taupe 6941



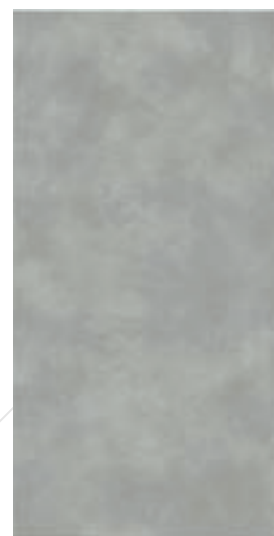
450 mm x 900 mm

Concrete Silver 6942



450 mm x 900 mm

Concrete Anthracite 6943



450 mm x 900 mm

Concrete Light Grey 6944







**Birch Marigold 7806**

228.6 mm x 1220 mm



**Birch Honey Gold 7830**

228.6 mm x 1220 mm



**Birch Buttermilk 7831**

228.6 mm x 1220 mm



**Washed Oak Sand 7836**

228.6 mm x 1220 mm



**Washed Oak Camel 7837**

228.6 mm x 1220 mm





**Weathered Pine 7910**

228.6 mm x 1220 mm



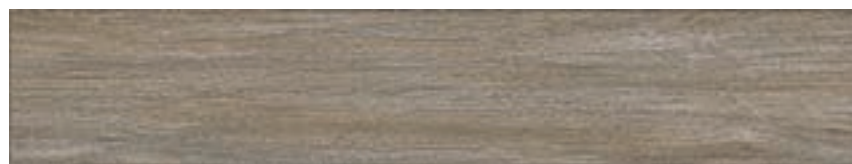
**Treasure Oak Umber 7911**

228.6 mm x 1220 mm



**Treasure Oak Autumn 7913**

228.6 mm x 1220 mm



**Washed Oak Grey 7915**

228.6 mm x 1220 mm



**Washed Oak Sunflower 7916**

228.6 mm x 1220 mm





# TECHNICAL DATA SHEET

PRESTG DECORIGID meets the requirements of EN ISO 10582

Characteristic	Standard	Unit	PRESTG DECORIGID
Type of Flooring	EN ISO 10582		PVC Heterogeneous
Classification	EN ISO 10874		Class 23/33/42
Weight	EN ISO 23997	kg/sqm	8.25
Overall Thickness	EN ISO 24346	mm	6.0
Wear Layer Thickness	EN ISO 24340	mm	0.55
Dimensional Stability	EN ISO 23999	%	< 0.10 average result 0.05
Wear Resistance	EN 660-2		T
Castor Chair Resistance	EN ISO 4918		No Change
Burning Characteristic	EN 13501-1		Blf-s1
Stain Resistance	EN ISO 26987		No Change PUR Surface Treatment
Slip Restraint	EN ISO 51130		R10
Acoustic Insulation	EN ISO 717-2	dB	22
Warranty In Years	EN 12524		10 Commercial 25 Residential





# PRESTG DECOLAY

PRESTG ACOUSTIC DECOLAY 55  
PRESTG DECOLAY 55  
PRESTG DECOLAY 70

## PATTERNS AND COLOURS

### STONE



Ivory 1722



Anthracite 6810



Light Grey 6920



Warm Ebony 1723



Grey 6906



Taupe 6921

### WOOD



Birch Buttermilk 7831



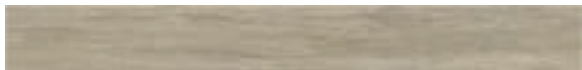
Natural French Oak 7841



Golden Landscape 7843



Weathered Pine 7910



Washed Oak Sand 7836



Lyon Oak 7842



Muted Khaki 7844



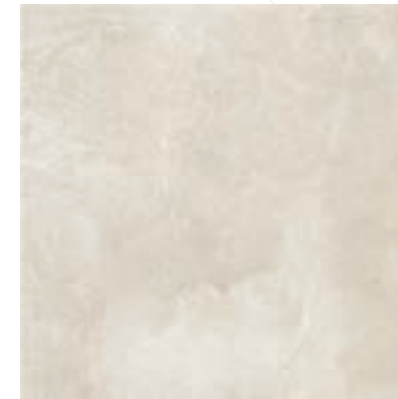
Washed Oak Sunflower 7916



	Wear Layer	Pattern	Total Thickness	Dimensions Width x Length	Packaging per carton
PRESTG ACOUSTIC DECOLAY 55	0.55 mm	STONE	5.0 mm	500 mm x 500 mm	2.50 sqm (10 pcs)
		WOOD	5.0 mm	250 mm x 1000 mm	2.50 sqm (10 pcs)
PRESTG DECOLAY 55	0.55 mm	STONE	4.5 mm	500 mm x 500 mm	2.50 sqm (10 pcs)
		WOOD	4.5 mm	225 mm x 1200 mm	2.70 sqm (10 pcs)
PRESTG DECOLAY 70	0.70 mm	STONE	5.0 mm	500 mm x 500 mm	2.00 sqm (8 pcs)
		WOOD	5.0 mm	225 mm x 1200 mm	2.16 sqm (8 pcs)

All colours available in 0.55 mm and 0.70 mm wear layer.





500 mm x 500 mm

Ivory 1722



500 mm x 500 mm

Warm Ebony 1723



500 mm x 500 mm

Anthracite 6810



500 mm x 500 mm

Grey 6906



500 mm x 500 mm

Light Grey 6920



500 mm x 500 mm

Taupe 6921





**Birch Buttermilk 7831**

225 mm x 1200 mm



**Washed Oak Sand 7836**

225 mm x 1200 mm



**Natural French Oak 7841**

225 mm x 1200 mm



**Lyon Oak 7842**

225 mm x 1200 mm







**Golden Landscape 7843**

225 mm x 1200 mm



**Muted Khaki 7844**

225 mm x 1200 mm



**Weathered Pine 7910**

225 mm x 1200 mm



**Washed Oak Sunflower 7916**

225 mm x 1200 mm



# TECHNICAL DATA SHEET

PRESTG DECOLAY meets the requirements of EN ISO 10582

Characteristic	Standard	Unit	PRESTG ACOUSTIC DECOLAY 55	PRESTG DECOLAY 55	PRESTG DECOLAY 70
Type of Flooring	EN ISO 10582		PVC Heterogeneous	PVC Heterogeneous	PVC Heterogeneous
Classification	EN ISO 10874		Class 23/33/42	Class 23/33/42	Class 34/43
Weight	EN ISO 23997	kg/sqm	8.00	7.56	9.30
Overall Thickness	EN ISO 24346	mm	5.0	4.5	5.0
Wear Layer Thickness	EN ISO 24340	mm	0.55	0.55	0.70
Dimensional Stability	EN ISO 23999	%	< 0.10 average result 0.05	< 0.10 average result 0.05	< 0.10 average result 0.05
Wear Resistance	EN 660-2		T	T	T
Castor Chair Resistance	EN ISO 4918		No Change	No Change	No Change
Burning Characteristic	EN 13501-1		Blf-s1	Blf-s1	Blf-s1
Stain Resistance	EN ISO 26987		No Change PUR Surface Treatment	No Change PUR Surface Treatment	No Change PUR Surface Treatment
Slip Restraint	EN ISO 51130		R10	R10	R10
Acoustic Insulation	EN ISO 717-2	dB	17	11	11
Warranty In Years	EN 12524		10 Commercial 20 Residential	10 Commercial 20 Residential	10 Commercial 20 Residential





# Get in touch

Want to learn more about HFLOR flooring solutions, or need help tackling an exciting project?  
We've got you covered.

Go to [www.hflor.eu](http://www.hflor.eu) to browse our collections, download inspirational brochures or use the virtual showroom to bring your ideas to life.  
You can also make an appointment with our dedicated team by sending us an email via '[hfloreu@lxhausys.com](mailto:hfloreu@lxhausys.com)'

Get in touch!

Follow us on    





# H·FLOR

## European Headquarter

LX Hausys Europe GmbH  
Lyoner Str. 15  
60528 Frankfurt am Main, Germany

[hfloreu@lxhausys.com](mailto:hfloreu@lxhausys.com)

---



Images in this brochure are approximate for color and pattern scale.  
Please use actual product samples to make your final selections.